


Tameside Serious Violence Strategy 2024-2029



The Serious Violence Duty

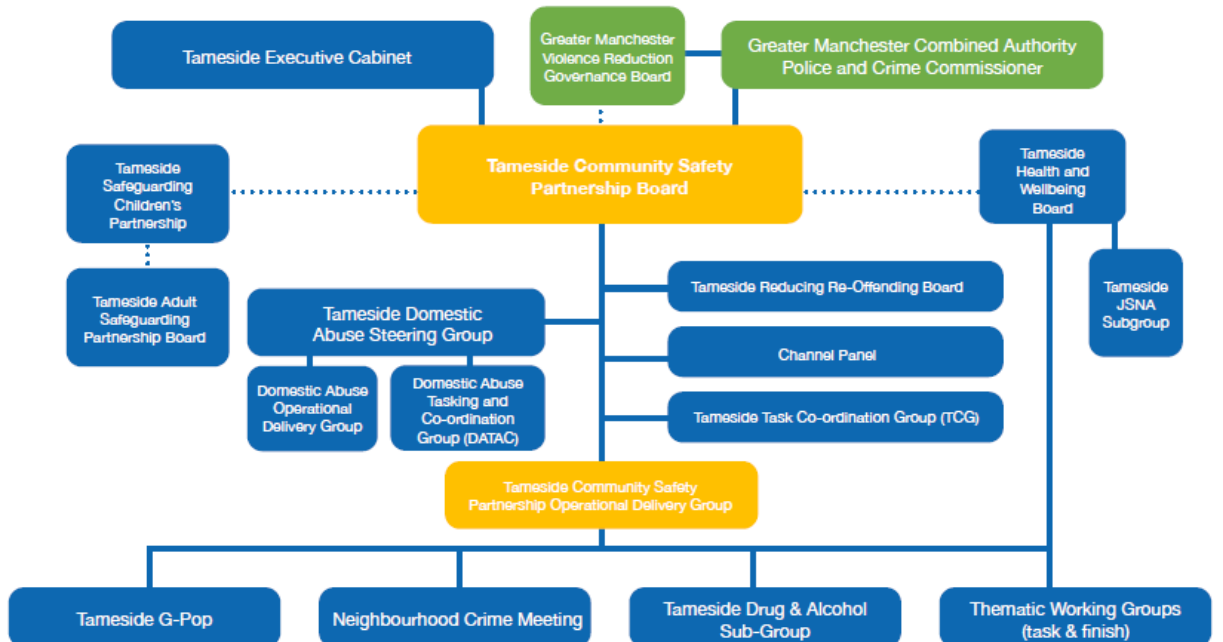
The Duty requires 'Specified Authorities' for a local government area to work together and plan to prevent and reduce serious violence.

- Tameside Council
- Greater Manchester Police (GMP)
- Greater Manchester Fire & Rescue Service (GMFRS)
- Probation Services
- Youth Offending Services
- NHS Greater Manchester Integrated Care Board (NHS GM ICB)



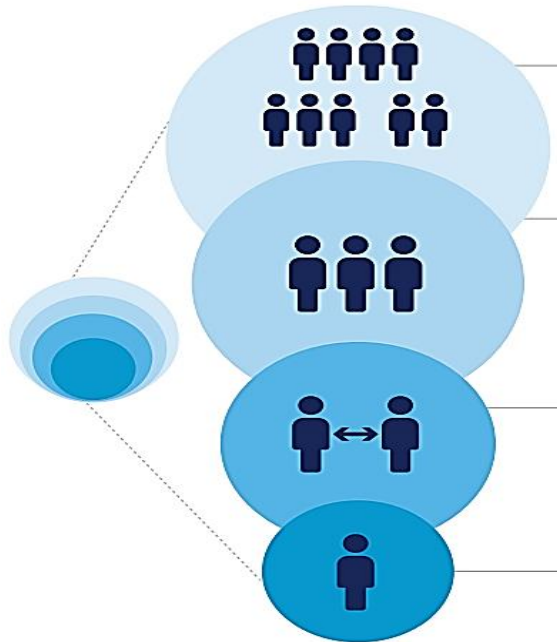
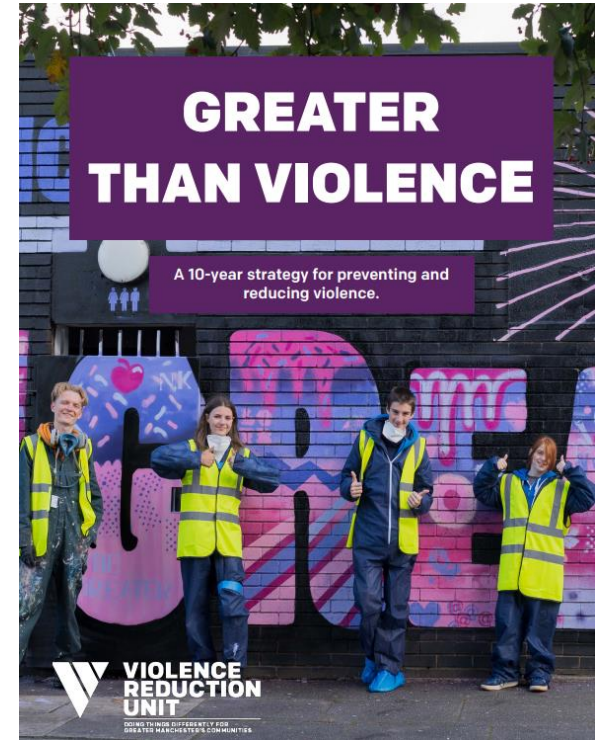
Home Office

Serious Violence Duty
Preventing and reducing serious violence



Working Across Greater Manchester

Tameside partners work closely with the GM Violence Reduction Unit (VRU) who have produced a Serious Violence Strategy for Greater Manchester.



The Duty encourages a 'public health approach' which has been done for GM and Tameside



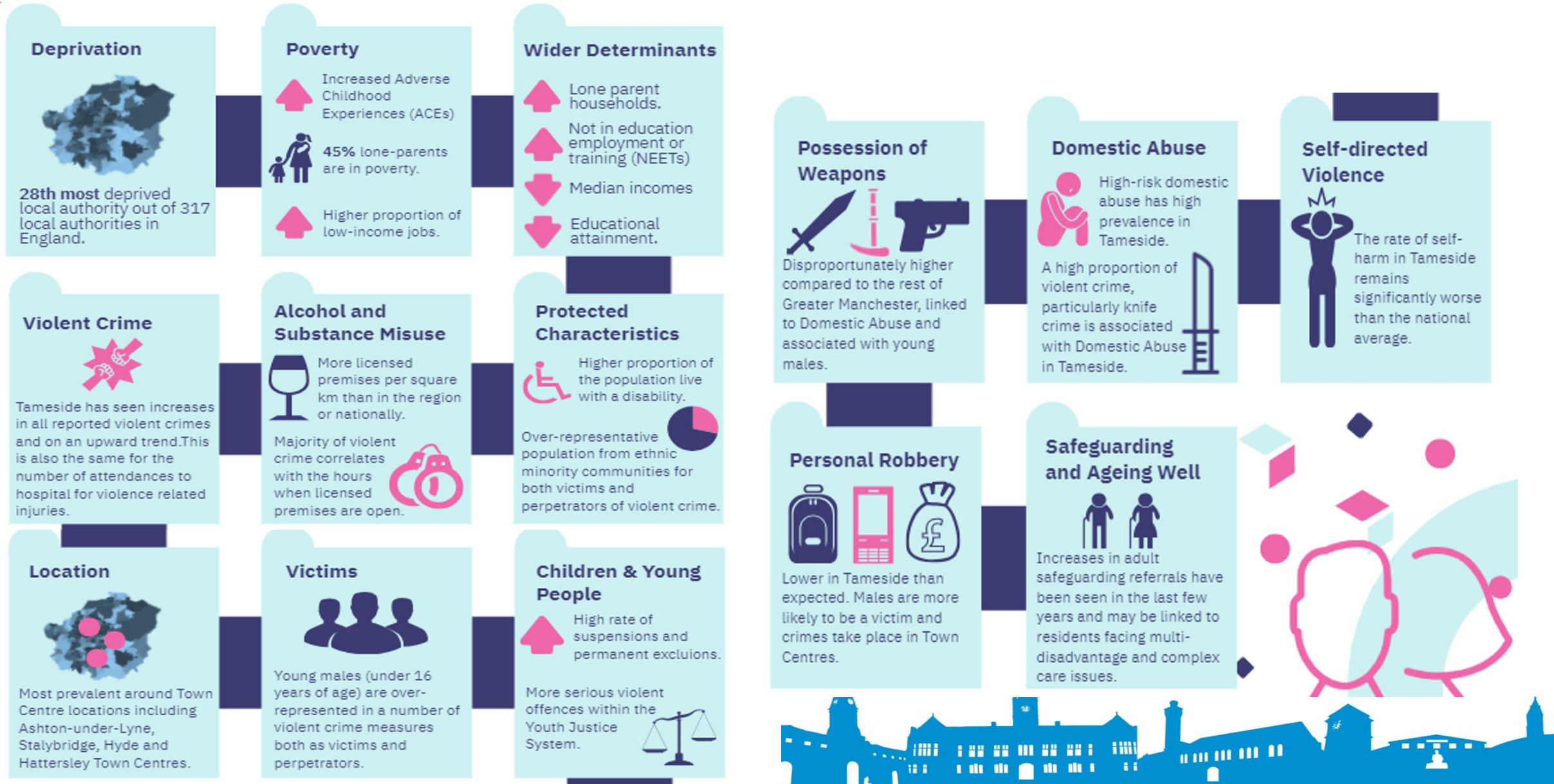
Defining Serious Violence in Tameside

Serious violence is the intentional use of physical force or power, threatened or actual, against oneself, another person, or against a group or community that either results in or has a high likelihood of resulting in injury, death, psychological harm, maldevelopment, or deprivation.

World Health Organisation



Serious Violence in Tameside



Priorities for Tackling Serious Violence in Tameside

(under each of these are between 3 and 7 'We will...' statements and objectives)

Priority 1: COMMUNITY-LED APPROACH

Priority 2: EARLY AND TIMELY INTERVENTION

Priority 3: PARTNERSHIPS FOR CHANGE

Priority 4: EQUALITY, EQUITY AND JUSTICE

Priority 5: TRAUMA RESPONSIVE SUPPORT FOR COMMUNITIES IN TAMESIDE



Next Steps

- The strategy for Tameside will be led by the Community Safety Partnership
- Developing an action plan to deliver the Tameside Serious Violence Strategy 2024-2029
- Changes to the services we provide and the work we do (from the evidence in the needs assessment; making sure we meet the priorities and commitments in the Strategy)
- Ongoing conversations and involvement with people living in Tameside, especially those affected by violence

